

SAWSTON GREENWAY

**Sawston – Stapleford – Great Shelford
– Biomedical Campus**

Have your say on a new walking, cycling and horse riding route linking Sawston, Stapleford, Great Shelford, Addenbrooke's/Biomedical Campus and Cambridge.



WHAT IS A GREENWAY?

Greenways will be new or improved walking, cycling and, where appropriate, horse riding routes. They will follow off-road paths, along quiet streets or with improved facilities on busier roads. They will help more people reach more of Greater Cambridge with safer, easier and more direct journeys.

The Challenge

The Greater Cambridge Partnership (GCP) is investing to secure sustainable economic growth and improve the quality of life for everyone in our area through a series of ambitious projects and programmes. Although a thriving centre for education, high-tech business and world-leading healthcare, there are severe transport challenges the area needs to address, including:

Continued growth of traffic and congestion

Limited public transport choices and lack of attractive walking and cycling routes

Toxic air pollution and high carbon emissions as a result of limited alternatives to the car

To meet these challenges, the GCP was awarded £500million to make vital improvements to our transport networks.

With this money, we are developing more affordable and greener travel options for our region. The Greenways aim to provide attractive and safer walking, cycling and, where appropriate, horse riding routes, between the city and its surrounding communities.

Improving our region through Greenways, to:



Provide better cycling and walking routes



Enhance public spaces where possible



Reduce the impact of traffic congestion and growing traffic levels



Support access to jobs and opportunities



Reduce air pollution and improve our health

Sawston Greenway Project

BACKGROUND

The Sawston Greenway is one of twelve proposed Greenways, which aim to make local walking and cycling journeys easier, connecting villages along the route to each other and to enable a direct connection with Cambridge.

Previous public consultation was held in 2019 with supportive feedback for the Sawston route. Further design work on the route was approved by the GCP Executive Board in October 2020.

Your views, ideas and experiences are important to us, and we are now providing an update of the design proposals and seeking your feedback for the Sawston Greenway.

THE ROUTE

Once the proposed Sawston Greenway is complete it will connect Cambridge to Sawston. The route covers seven miles of improvements routing south from Cambridge, via Addenbrooke's/Biomedical Campus, Great Shelford, Stapleford and Sawston.

The Greenway proposals focus on making improvements to key junctions to improve safety and connectivity for pedestrians and cyclists. Improvements for walking and cycling will also be made to those sections of the route where space permits.

The route follows existing roads and paths with the aim to provide a high quality route for walking, cycling and horse riding in the area.

THE PROPOSALS

The proposals involve improvements to a number of junctions along the route where traffic volumes are greatest, providing improved crossings for people walking and cycling.

Route upgrades are proposed for different sections of the Greenway. On Robinson Way this would involve separated walking and cycling facilities which would be continued along Francis Crick Avenue delivered by the CSET 2 project. The Genome Path would be widened to improve comfort for all users. A shared use path is proposed along the west side of the A1301 between the junctions with Cambridge Road and Mill Lane.

Subject to engineering feasibility and landowner and Network Rail agreement, we are proposing a new off-road path between Stapleford and Dernford Reservoir to improve access to the existing open space.

We want to hear what local people, organisations, and businesses think about these proposals.

Visualisations of the scheme

EXAMPLE OF URBAN JUNCTION

Our proposals include high quality signal controlled facilities for pedestrians and cyclists at busy junctions. This includes fully separated walking and cycle crossings at the junction of Long Road and Robinson Way to minimise conflict and improve safety.



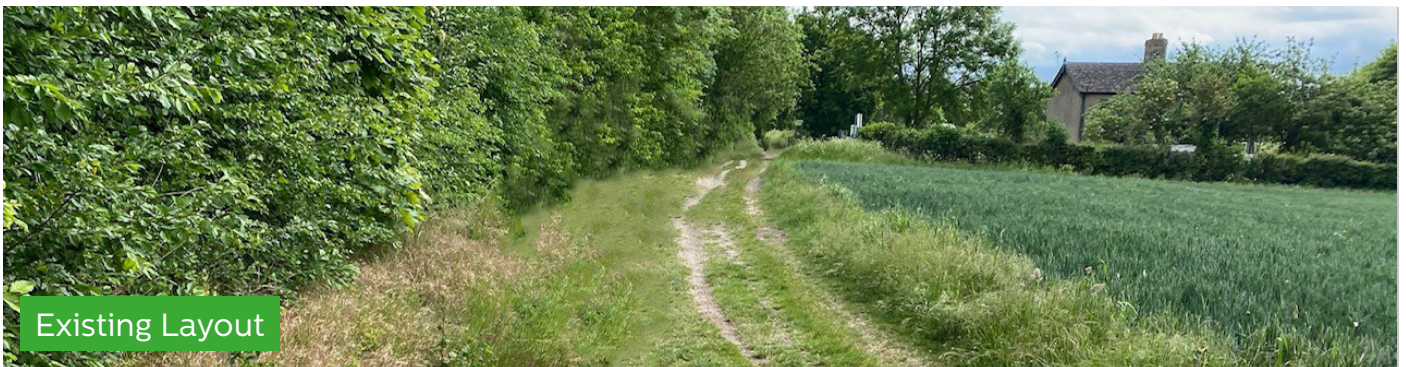
Existing Layout



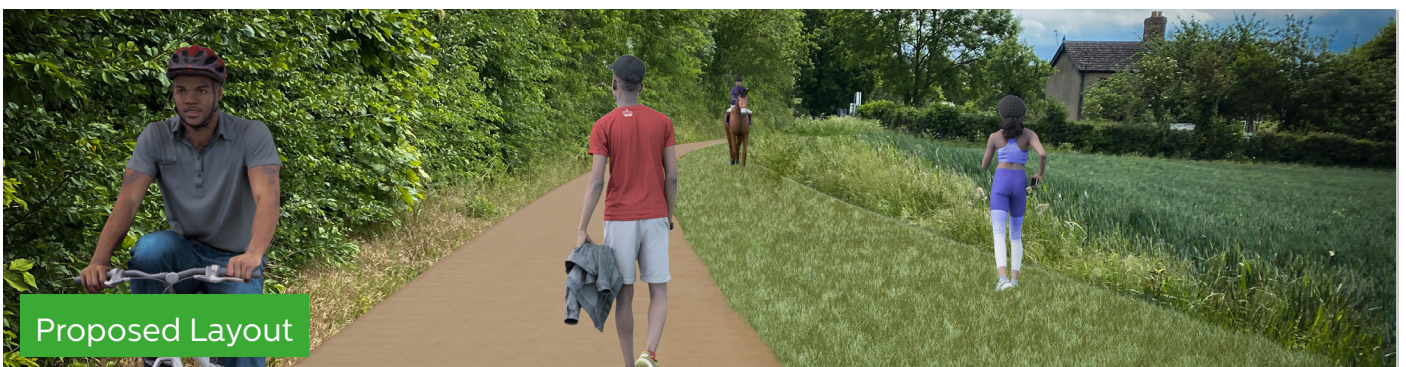
Proposed Layout

TYPICAL RURAL SETTING

Our proposals include shared use paths where the route runs off-road. This typically includes a 3-metre wide sealed track with a 2-3 metre grass verge for soft surface users (including horse riders) running parallel. Exact materials are still to be confirmed.



Existing Layout



Proposed Layout

Next stages

The next stages to progress the design of the Sawston Greenway will include undertaking the following tasks:

1 ENVIRONMENTAL & ECOLOGY IMPACTS

We are considering the environmental constraints and assessing the possible effects of the proposals on the environment and local ecology, so that this can be incorporated into the next stage of scheme design. This will consist of arboricultural and ecological surveys and hedgerow assessments. Our aim will be to minimise the impacts and enhance biodiversity overall (biodiversity net gain).

2 ENGAGEMENT WITH LANDOWNERS

We will continue to talk to the various private landowners along the route to gain their consent before the scheme is progressed.

3 PLANNING CONSENT


Under the Town and Country Planning Act 1990, planning consent may be required for the Sawston Greenway, subject to final preliminary designs, prior to construction.

4 TRAFFIC MODELLING

We will model and assess traffic flows at key junctions to understand the potential impact proposals may have on journey times.

5 DESIGN COORDINATION

The route of the Sawston Greenway interfaces with a number of other local strategic projects such as CSETs 2, Cambridge South Station and Cambridge Biomedical Campus Development. We will ensure that the design and implementation of the Sawston Greenway is coordinated with these other projects.



Greenway improvement types

The Sawston Greenway will include the following types of route sections:

A. QUIET ROAD

On sections of the route using quieter roads where vehicle speeds are reduced, white painted signage would be added to the carriageway where appropriate. Where there is no existing footpath, signage may be used to warn motorists that this is a multi-use route.

B. NEW/UPGRADED SHARED USE PATH

A shared use path would typically include a 3-metre wide sealed track with a 2-3 metre grass verge for soft surface users (including horse riders) running parallel. Where the path runs beside the carriageway, a verge will separate the path from the road, where possible.

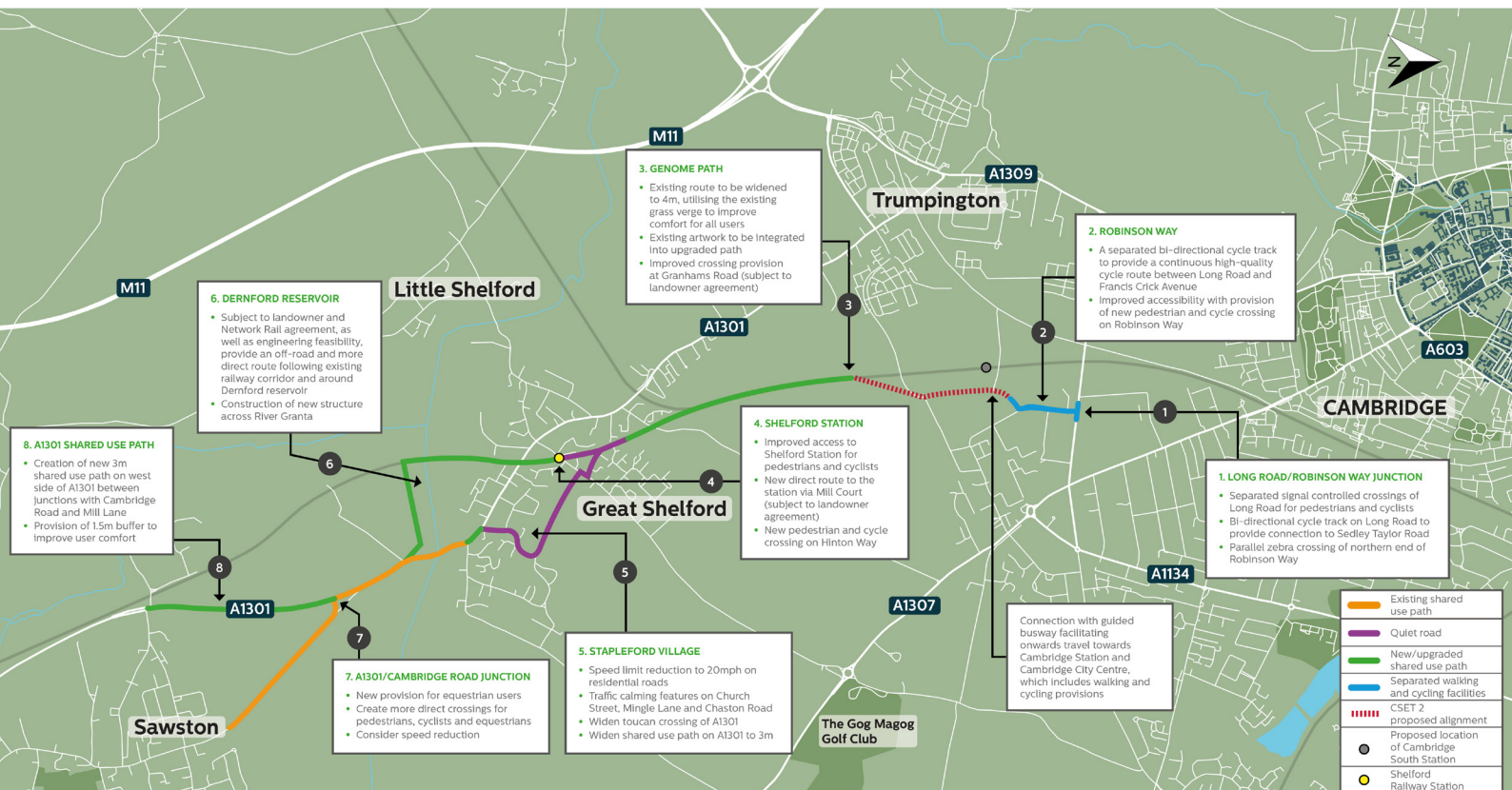
C. SEPARATED WALKING AND CYCLING FACILITIES

A bi-directional cycle track separated from the road with separate accessible footway. This is the most appropriate provision for walking and cycling where usage is expected to be highest.

D. EXISTING SHARED USE PATH

Existing active travel route delivered by GCP in 2019, which will form part of the Sawston Greenway, creating a continuous route.

The map illustrates the scheme alignment and key proposals. Technical drawings for the Sawston Greenway can be viewed at: www.greatercambridge.org.uk/sawston-greenway



Potential impacts and mitigations

The scheme aims to deliver positive impacts by enhancing routes and facilities for walking, cycling and, where appropriate, horse riding to support safer, easier and healthier journeys as part of our vision for Greater Cambridge.

The routes are being designed to be fully accessible for wheelchairs, opening up more of our places to more people.

Proposals for on-road sections of the route will feature measures to improve safety for all, including traffic calming and safer crossing points. We are reviewing car parking on the route to ensure it does not create excess risk to people cycling.

Materials and surfacing

Generally, routes will be made from a hard, smooth surface such as asphalt. In more rural locations, including bridleways we will introduce appropriate surface treatment that is sensitive to the local environment.

Visual impact

The visual impact of the route will be minimised through measures such as landscaping (including mounds) on the sides of paths where required, which will also include pollinator friendly planting.

Equality analysis

To help ensure that we are meeting our obligations under the Equality Act 2010 we are preparing an Equality Impact Assessment (EqIA) for the proposals put forward in this engagement exercise.

An EqIA is a tool to assess the impact any proposals would have on the protected characteristics: age, disability, sex, gender identity, sexual orientation, race, religion or belief, pregnancy or maternity, marriage and civil partnership and carer's responsibilities.



Timeline

Final route options were presented to the public and the Executive Board in 2020. We are now developing the technical design. The next stages are outlined below:



GCP Executive Board approval



Obtain planning consent



Develop designs



Construct & build

On-going engagement with key stakeholders, land owners and the wider public.

HAVE YOUR SAY

We want to continue to understand the views of local communities and other interested parties on our proposals and use this feedback to help produce the design for this scheme.

The engagement period will run for four weeks from 14th November to midday 9th December 2022. There are a number of ways to respond and provide feedback:



Fill out the online questionnaire at: www.greetercambridge.org.uk/sawston-greenway



Download or request a paper questionnaire and return to: **Greater Cambridge Partnership, PO Box 1493, Mandela House, 4 Regent Street, Cambridge, CB1 0YR**



We will be holding one virtual event and one in person event.

Virtual Zoom Event

Date: Wednesday 23 November

Time: 18:00-20:00

Please register details online at:

www.greetercambridge.org.uk/sawston-greenway

Venue: Sawston Mill Lane Pavilion

Date: Wednesday 30th November

Time: 14:00-19:00

Address: 5-19 Mill Lane, Sawston, Cambridge, CB22 3JE

NEXT STEPS

Your feedback will be analysed once the engagement period ends. The findings will then be compiled into a summary report and made available on our website. Your views alongside the Equality Impact Assessment will be considered by the GCP Executive Board.

GET IN TOUCH



consultations@greetercambridge.org.uk



01223 699906



@GreaterCambs #CambsGreenways



www.facebook.com/GreaterCam

ALTERNATIVE FORMATS: If you require any of the material in an alternative format or language, please email: consultations@greetercambridge.org.uk or call 01223 699906.